



Strategic Plan 2018-2020

MINING AND ENERGY RELATED COUNCILS NSW





Vision

As the peak body in NSW, empowering, resourcing and advocating on behalf of local councils impacted by mining and energy production



History

The nucleus of the Association was formed in 1978 at a conference in Wollongong, where it was clearly recognised that coal related local government areas needed to present a comprehensive, co-ordinated and co-operative approach to State and Federal Government. An alliance formed at a conference convened by Wollongong City Council in 1982 saw the birth of the Association of Coal Related Councils.

In 1993, the Association was approached to represent a metalliferous council and it became apparent that the Association could equally represent both interests and subsequently became the Association of Mine Related Councils.

In 1999, the Association expanded its base once again to represent Local Government in all aspects of mining, including extractive industries, gas exploration, quarries and minerals.

In 2013 a new Strategic framework was developed to guide the growth and direction of the Association. During 2014 in response to State Government policy related to Coal Seam Gas the Association developed a comprehensive position paper which outlined the merits and concerns around this industry.

In 2017 the Association adopted a new direction embracing the necessity and opportunities surrounding the growing renewable energy sector. Renaming the Association to reflect this new direction. Mining and Energy Related Councils NSW.



Consultation

The Association through its network of member councils has developed a broad socio-political base. Member councils represent the large regional through to small country shires all with the same interest of addressing the challenges and opportunities mining brings to their local communities.

The Association consults widely through a variety of channels within and across local government associations, General Manager networks, council senior staff associations and local councillors.

The Association has over time developed productive consultative relationships with peak mining groups and NSW Government departments. The Association has also canvassed the opinion and support from Ministers and Shadow Ministers, environment groups, unions and various academic researchers.

Strategic Directions

Advocacy

Advocacy to ensure member councils are heard

Generating a dynamic and respected voice, effectively representing member councils.

Resourcing

Resourcing to support member councils

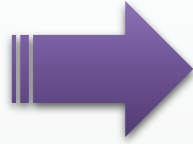
Strengthening the local capacity of member councils through the sharing of expert knowledge and skills.

Policy

Develop policy to empower member councils

Empowering member councils with the tools to design, plan and negotiate effectively for the benefit of their communities.

Deliverables



Advocacy

Advocacy so that member councils are heard

Generating a dynamic and respected voice, representing member councils and their communities affected by Mining and Energy production.

Foster positive government relationships

Action

Invitations issued to state Ministers and Shadow Ministers and relevant senior staff to attend meetings, and to meet with Association delegations

Outcome

An ongoing dialogue built on mutual trust and by partisanship

Develop positive industry relationships

Action

Regular meetings with industry peak bodies for Mining and renewable Energy sectors

Outcome

An amicable relationship with industry bodies based on respect and community enhancement

Representation on government committees and taskforces

Action

Memberships
Resources for Regions – Regional Independent Assessment Panel
Regional Advisory Forum
Western Mining Taskforce
Subsidence Advisory NSW

Outcome

Ongoing positive relationships with working groups to ensure member councils receive strong representation and a fair hearing for their projects and concerns

Deliverables



Resourcing

Resourcing to support member councils

Strengthening local capacity of member councils through the sharing of expert knowledge and skills to protect the interests of their communities.

Consultant review

Action

Undertake a review of existing consultants to ascertain best value for member councils

Outcome

A recommended list of companies specializing in mining & energy related environmental assessment and planning circulated to member councils

Shared Expertise

Action

Sponsor a culture of resource sharing across the Association

Outcome

A shared data base of staff expertise, policies and processes across a range of planning and assessment portfolios available to member councils

Marketing Policy

Action

The Executive Committee to develop a marketing Policy for the ongoing growth of the Association

Outcome

A revised and revitalized Marketing Policy will drive council enquiries and increased membership

Deliverables



Policy

Policy to empower member councils

Empowering member councils with the tools to design, plan and negotiate for the benefit of their communities.

Renewable Energy

Action

Review MERC policy on CSG in the light of the NSW Gas Plan and commence renewable energy dialogue

Outcome

MERC will have clearly defined positions on CSG, Coal and Renewable Energy Production

VPA's Project

Action

VPA's Working Party will seek to complete negotiations with industry and DPE

Outcome

Member councils will have a planning and assessment template for the negotiation of VPAs with mining, energy producers and for major infrastructure projects

Research Sponsorship

Action

Research fellowships will be offered to inform MERC on Post Mining Rehabilitation, landuse plans and Social Impact Plans and Renewable Energy Communities

Outcome

Member councils will have the benefit of an expert advice and MOUs with major universities

Performance measures

Advocacy

- ⑩ Number of State Ministers and Shadow Ministers and Senior Departmental staff attending Association meetings and level and frequency of meetings with MERC delegations
- ⑩ Number of meetings held with industry groups representing mining and renewal energy sector peak bodies
- ⑩ Regular reports by delegates to government working parties to Association meetings

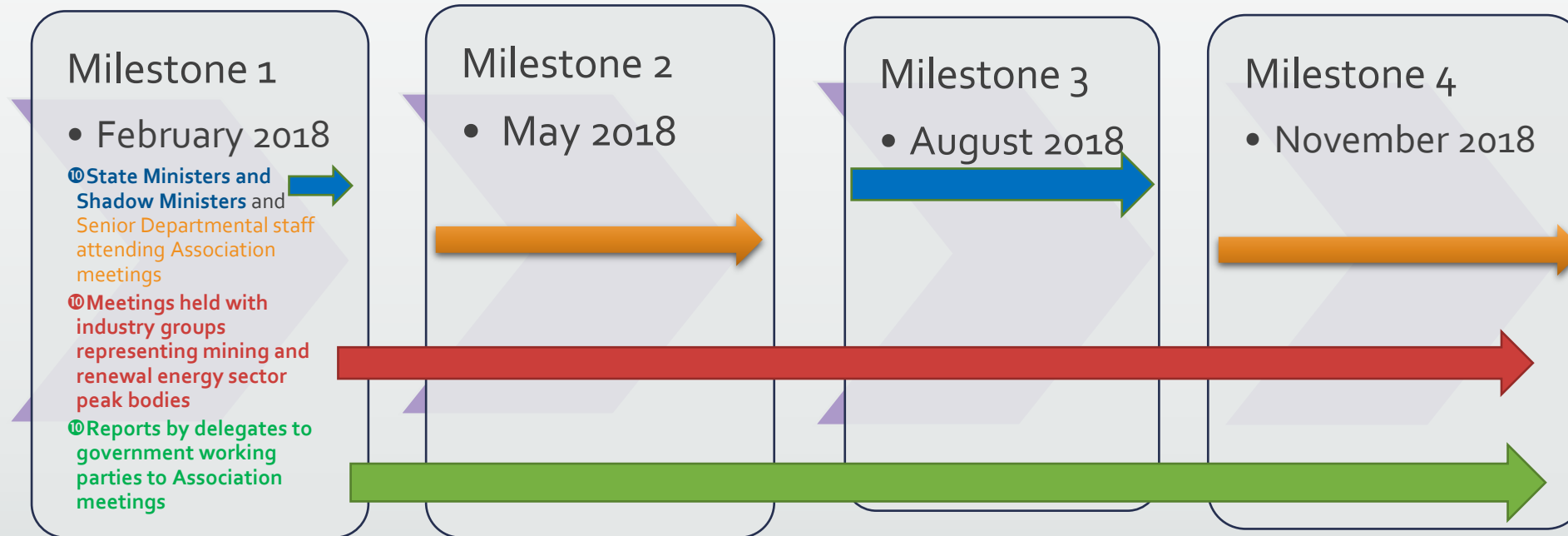
Resourcing

- ⑩ Panel of members formed to review with council senior staff existing consultants
- ⑩ A comprehensive survey undertaken through the offices of the General Manager of member councils to provide list of staff expertise relevant the operations and priorities of the Association
- ⑩ Executive Committee to develop a new Marketing Policy that embraces the strategic direction of MERC.

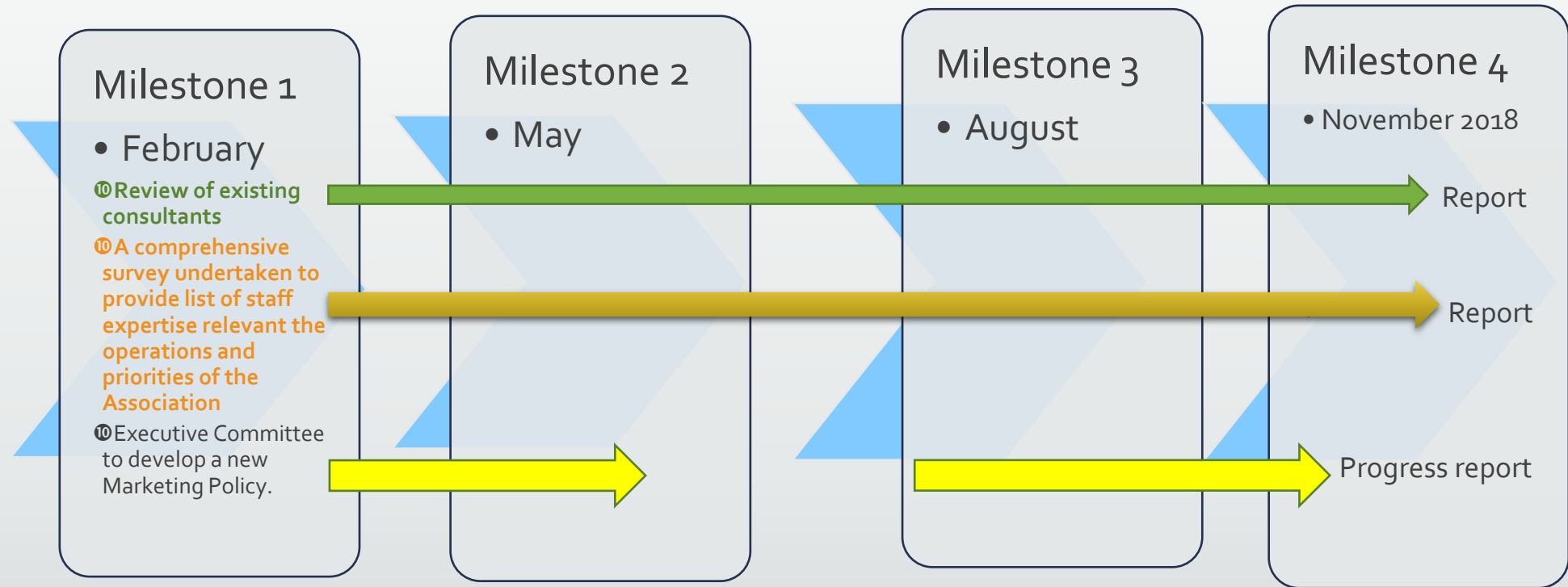
Policy

- ⑩ CSG position paper revised by August 2018 and surveys undertaken from member and possible member councils on their positions in respect to Renewable energy production
- ⑩ Final report by VPAs Working Party presented to MERC for ratification
- ⑩ Research proposals presented to at least one Association meeting each year for consideration

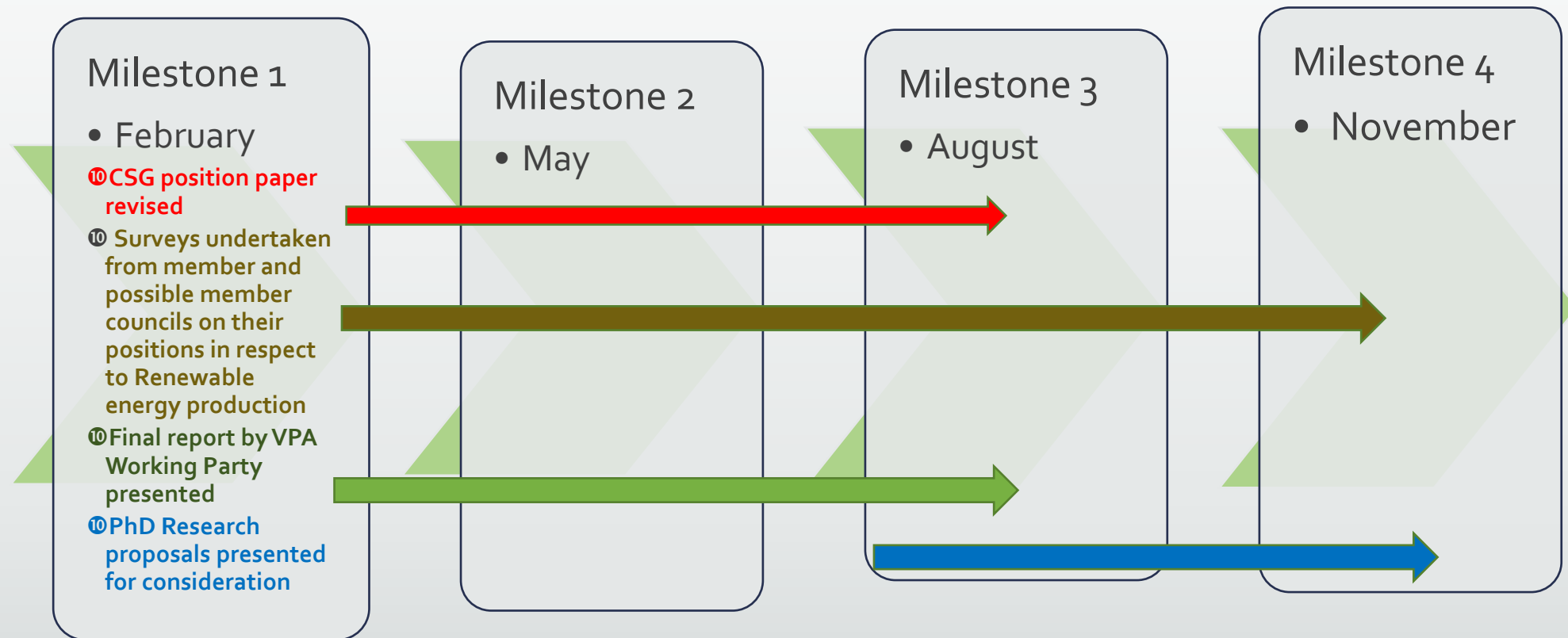
Strategic Direction – **Advocacy** – 2018 *Milestones*



Strategic Direction – **Resourcing** – 2018 *Milestones*



Strategic Direction – **Policy** – 2018 *Milestones*



Strategic Plan KPIs

2018

Advocacy

- At least one High level Government or Industry presenter at each Association meeting to address priority issues of the Association
- Evidence of contact made with renewable energy sector peak bodies and dialogue established with the Association
- Reports from Association delegates circulated to Association members in a timely and accurate manner

Resourcing

- Final list of recommended consultants prepared with associated costs circulated to member councils by November 2018
- Facilitate and coordinate the development of expert staff lists through General manager networks and give regular updates on progress
- Facilitate with delegates the development of a new Marketing Policy by November 2018

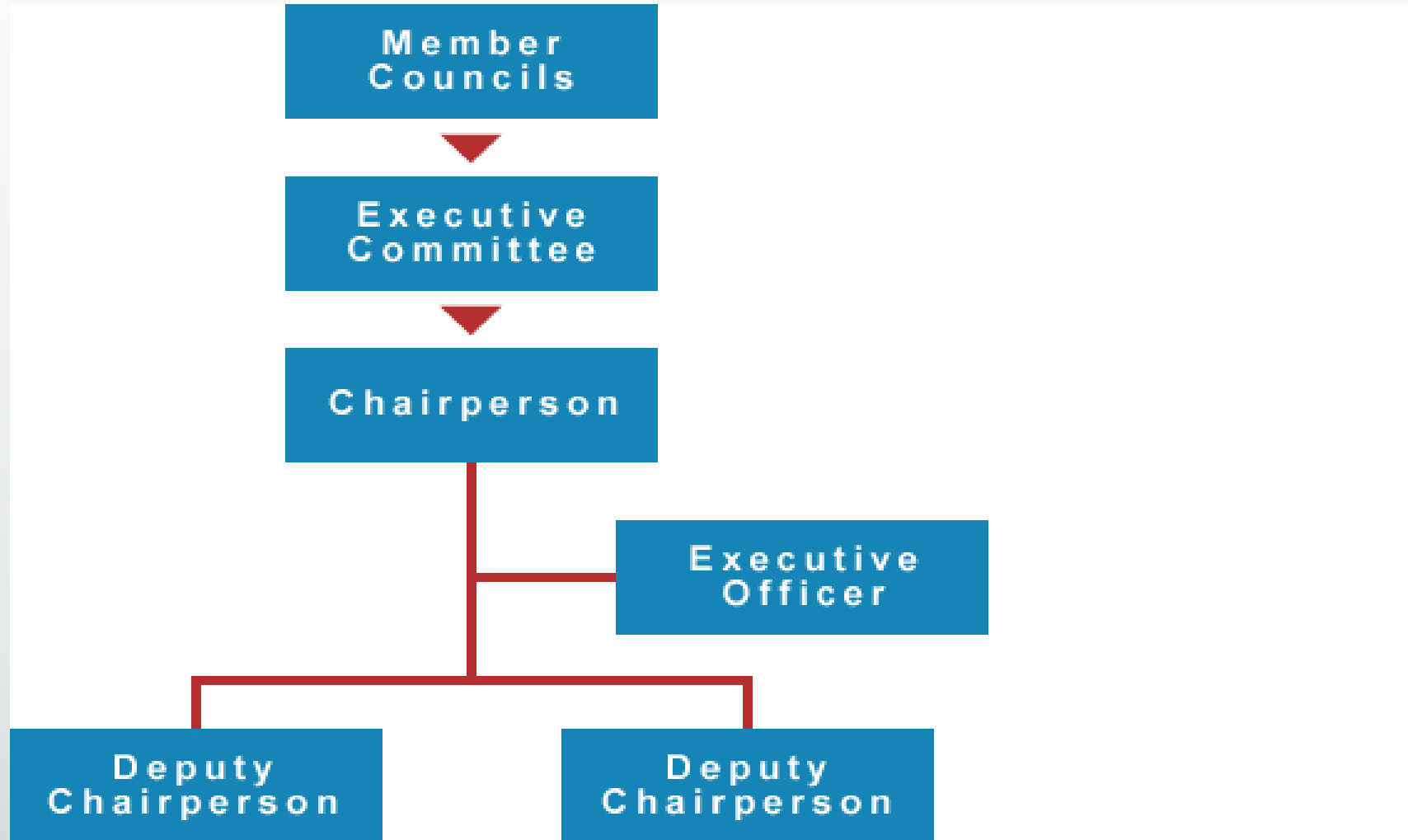
Policy

- CSG policy review completed and posted on our newly revitalized website by August 2018
- Feedback from councils on renewable energy production in their areas gathered and circulated to members for consideration by November 2018
- Final report from the VPA Working Party presented to MERC by August 2018
- PhD Research students invited to present at least one MERC meeting each year

Quarterly and Annual Reviews

- The Association will receive quarterly reviews from the Executive and Executive Officer on the progress of Milestones against Performance Measures
- An Annual Report will be provided by the EO, endorsed by the Executive Committee describing the Associations progress towards its Strategic Directions
- At the Association's November meeting Milestones and KPIs will be endorsed for the following year.

Organisational Structure





Mining and Energy Related Councils (MERC) represents 19 local government councils in NSW....with more intending to join.

Bland Shire Council, Blayney Shire Council, Broken Hill City Council, Cabonne Shire Council, Cessnock City Council, Cobar Shire Council, Dubbo Regional Council, Forbes Shire Council, Gunnedah Shire Council, Lachlan Shire Council, Mid-Western Regional Council, Newcastle City Council, Orange City Council, Parkes Shire Council, Singleton Council, Warrumbungle Shire Council, Wentworth Shire Council, Wollondilly Shire Council and Wollongong City Council.

The Association of *Mining and Energy Related Councils* NSW INC

2018 - 2020 Strategic Plan

